

# ESCAPE

Leyden Rock | 8857 Eldora Street | Arvada, CO 80007 | 303-798-EPIC | [www.LiveEpicHomes.com](http://www.LiveEpicHomes.com)



Colorado Foothills



Modern Prairie



Colorado Rustic

2,361 to 4,028 sq. ft. | 2 to 5 bedrooms | 2.5 to 3.5 bathrooms | 3-car split garage

Clear sight lines stretch all the way from the front door to the bright back windows of this spacious ranch home with both one and two car garages. The study off the entry and dual master bedrooms both with en suite bathrooms combine to create a very flexible layout with lots of ways to customize. Open entertaining space flows seamlessly from the large kitchen to the outdoor room for al fresco dining on warm evenings. The center fireplace in the grand room provides a cozy focal point for watching the game or just reading a great book while snow falls outside.

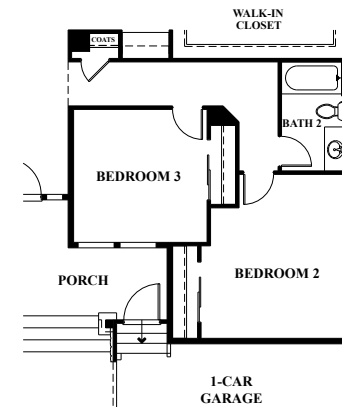
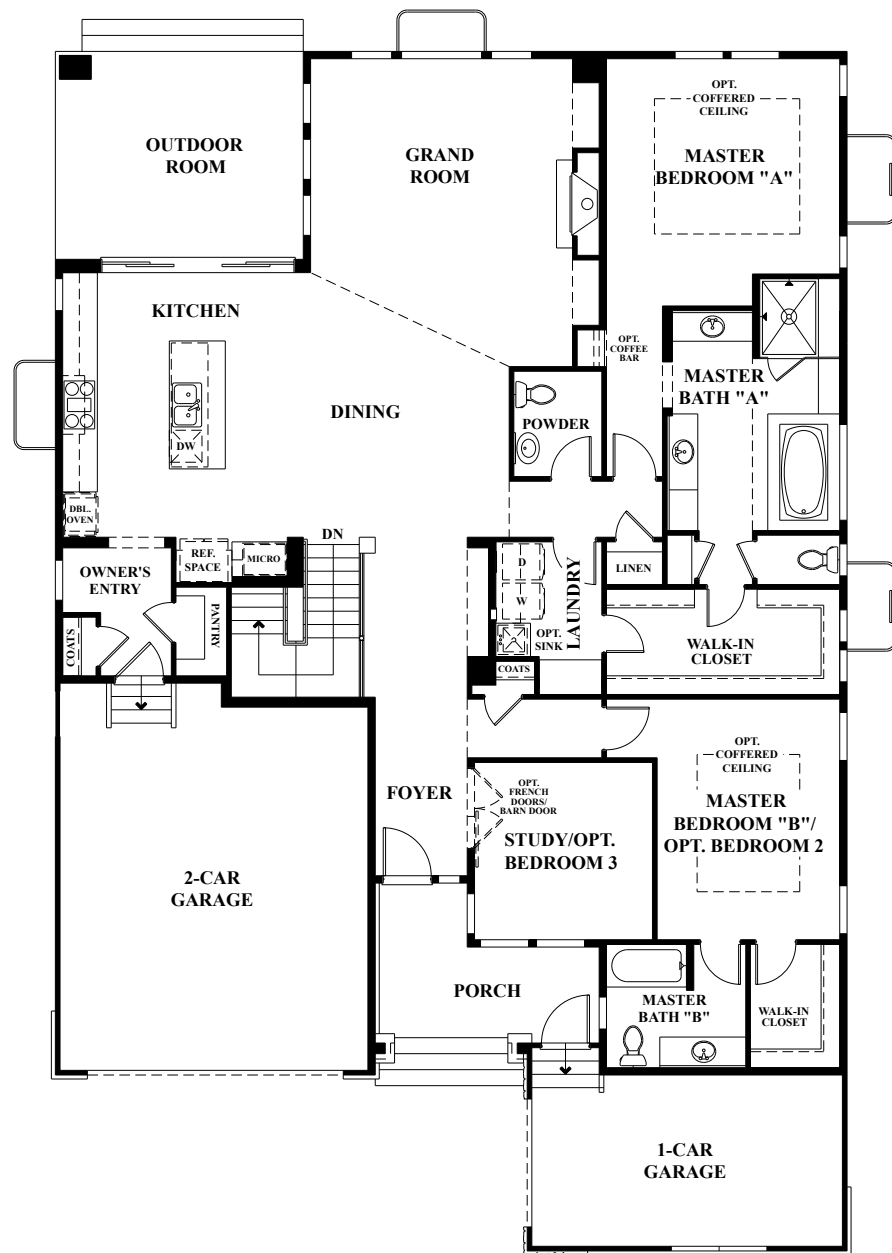
## PRELIMINARY



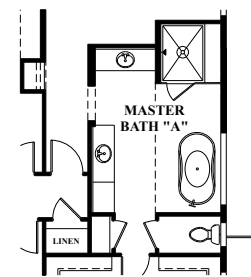
Subject to errors and omissions. All renderings and plans are artist's renderings only, do not represent specific architectural or community details and are subject to change without notice. All measurements, square footages, distances and locations are approximate and may vary from what is shown herein. Prices, features, options, materials, services and promotions are subject to change and availability. Consult sales associate for additional information. Equal housing opportunity. ©2016 Epic Homes, LLC.



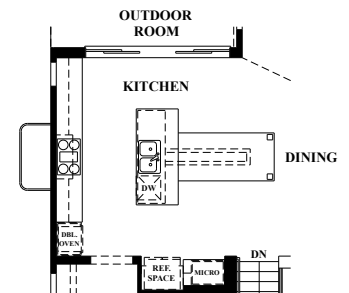
# ESCAPE MAIN



OPTIONAL  
BEDROOM 3



OPTIONAL  
FREE STANDING TUB



OPTIONAL  
BUILT-IN  
DINING

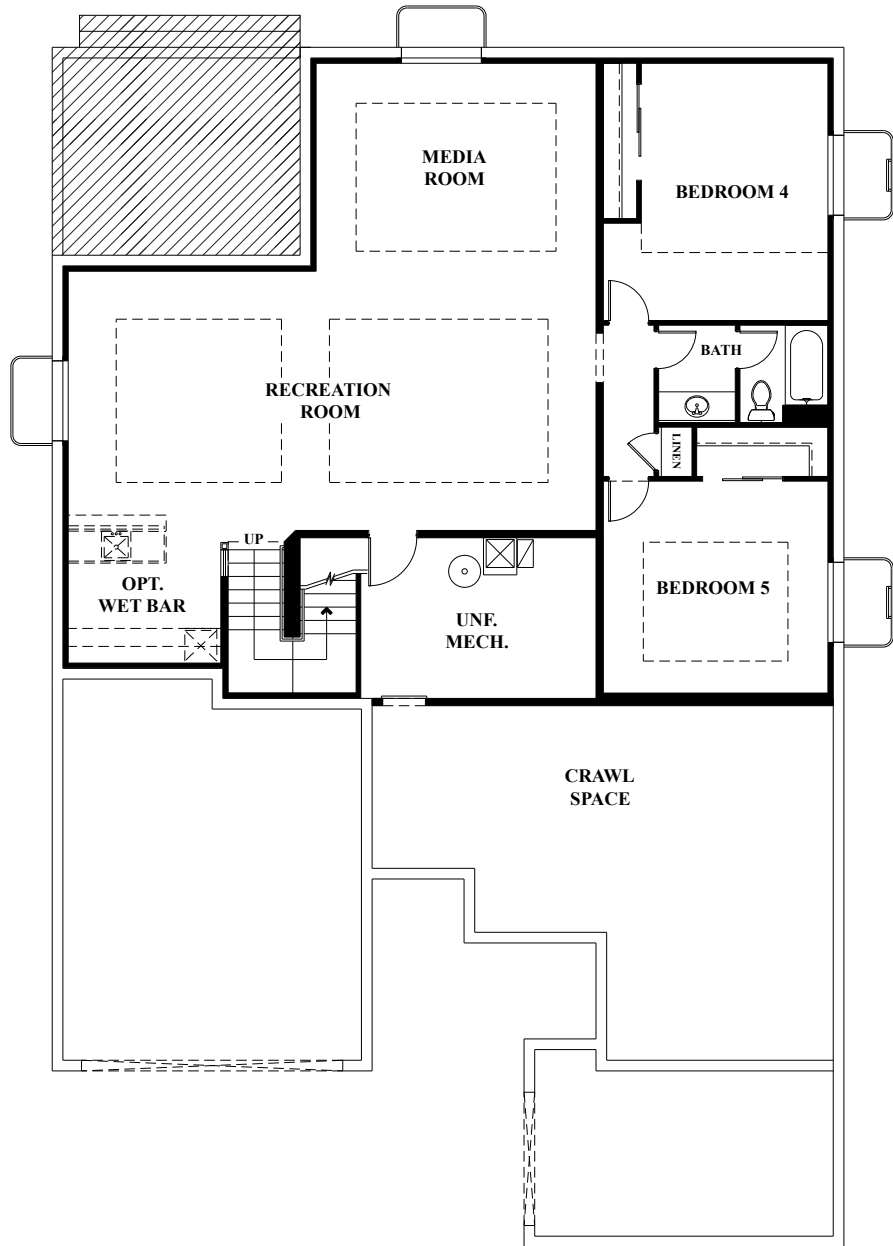
PRELIMINARY



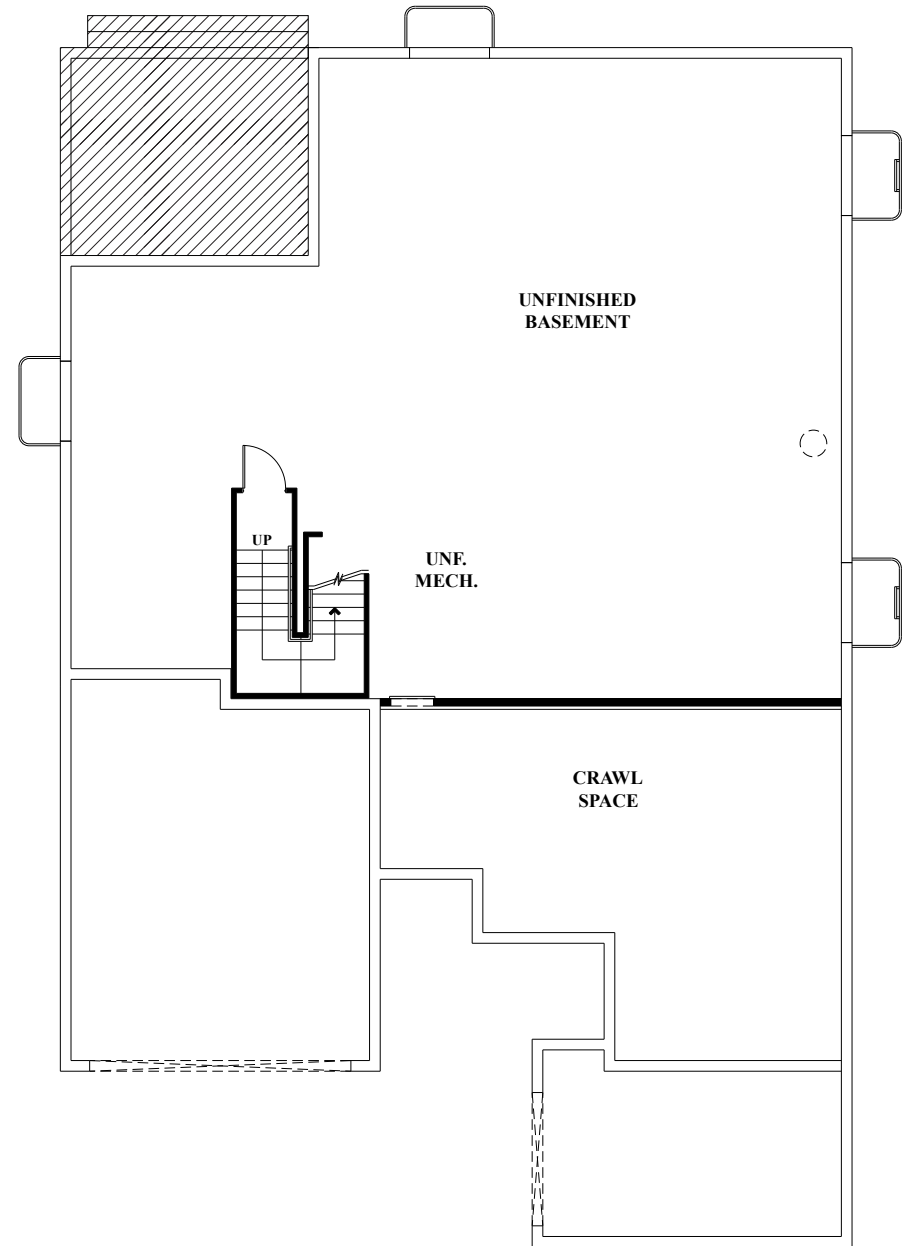
Subject to errors and omissions. All renderings and plans are artist's renderings only, do not represent specific architectural or community details and are subject to change without notice. All measurements, square footages, distances and locations are approximate and may vary from what is shown herein. Prices, features, options, materials, services and promotions are subject to change and availability. Consult sales associate for additional information. Equal housing opportunity. ©2016 Epic Homes, LLC.



# ESCAPE BASEMENT



(optional finish)



## PRELIMINARY



Subject to errors and omissions. All renderings and plans are artist's renderings only, do not represent specific architectural or community details and are subject to change without notice. All measurements, square footages, distances and locations are approximate and may vary from what is shown herein. Prices, features, options, materials, services and promotions are subject to change and availability. Consult sales associate for additional information. Equal housing opportunity. ©2016 Epic Homes, LLC.

